

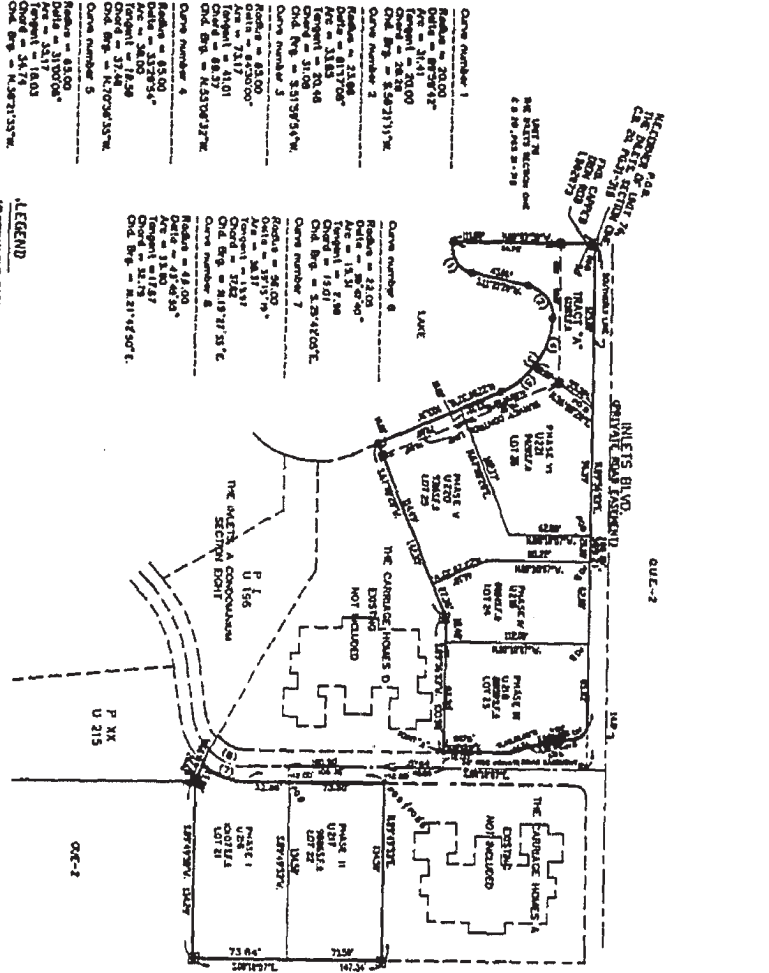
EXHIBIT B

SURVEY AND PLOT PLAN

See Condominium Book _____, pages _____ through _____ Official
Records, Sarasota County, Florida.

** OFFICIAL RECORDS **
BOOK 2279 PAGE 2381

**THE INLETS, A CONDOMINIUM
 SECTION NINE
 SECTION 36, TOWNSHIP 38 SOUTH, RANGE 18 EAST
 SARASOTA COUNTY, FLORIDA**



Curve number 1
 Radius = 20.00'
 Area = 1.717142'²
 Perimeter = 20.00'
 Chord = 20.00'
 Chord Brg = S11°31'17"W

Curve number 2
 Radius = 21.00'
 Area = 1.818182'²
 Perimeter = 21.00'
 Chord = 21.00'
 Chord Brg = S11°39'54"W

Curve number 3
 Radius = 22.00'
 Area = 1.927273'²
 Perimeter = 22.00'
 Chord = 22.00'
 Chord Brg = S11°48'31"W

Curve number 4
 Radius = 23.00'
 Area = 2.043636'²
 Perimeter = 23.00'
 Chord = 23.00'
 Chord Brg = S11°57'08"W

Curve number 5
 Radius = 24.00'
 Area = 2.167273'²
 Perimeter = 24.00'
 Chord = 24.00'
 Chord Brg = S12°05'45"W

Curve number 6
 Radius = 25.00'
 Area = 2.298182'²
 Perimeter = 25.00'
 Chord = 25.00'
 Chord Brg = S12°14'22"W

Curve number 7
 Radius = 26.00'
 Area = 2.436364'²
 Perimeter = 26.00'
 Chord = 26.00'
 Chord Brg = S12°22'59"W

Curve number 8
 Radius = 27.00'
 Area = 2.581818'²
 Perimeter = 27.00'
 Chord = 27.00'
 Chord Brg = S12°31'36"W

Curve number 9
 Radius = 28.00'
 Area = 2.734545'²
 Perimeter = 28.00'
 Chord = 28.00'
 Chord Brg = S12°40'13"W

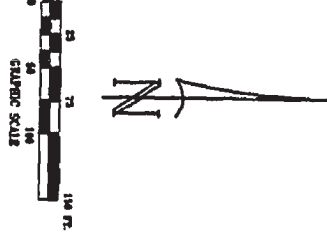
Curve number 10
 Radius = 29.00'
 Area = 2.894545'²
 Perimeter = 29.00'
 Chord = 29.00'
 Chord Brg = S12°48'50"W

Curve number 11
 Radius = 30.00'
 Area = 3.061818'²
 Perimeter = 30.00'
 Chord = 30.00'
 Chord Brg = S12°57'27"W

Curve number 12
 Radius = 31.00'
 Area = 3.236364'²
 Perimeter = 31.00'
 Chord = 31.00'
 Chord Brg = S13°06'04"W

LEGEND

PERMANENT REFERENCE MONUMENT SET
 1 1/2" DIA. GALVANIZED IRON PIPE
 2 1/2" DIA. GALVANIZED IRON PIPE
 3 1/2" DIA. GALVANIZED IRON PIPE
 4 1/2" DIA. GALVANIZED IRON PIPE
 5 1/2" DIA. GALVANIZED IRON PIPE
 6 1/2" DIA. GALVANIZED IRON PIPE
 7 1/2" DIA. GALVANIZED IRON PIPE
 8 1/2" DIA. GALVANIZED IRON PIPE
 9 1/2" DIA. GALVANIZED IRON PIPE
 10 1/2" DIA. GALVANIZED IRON PIPE
 11 1/2" DIA. GALVANIZED IRON PIPE
 12 1/2" DIA. GALVANIZED IRON PIPE
 13 1/2" DIA. GALVANIZED IRON PIPE
 14 1/2" DIA. GALVANIZED IRON PIPE
 15 1/2" DIA. GALVANIZED IRON PIPE
 16 1/2" DIA. GALVANIZED IRON PIPE
 17 1/2" DIA. GALVANIZED IRON PIPE
 18 1/2" DIA. GALVANIZED IRON PIPE
 19 1/2" DIA. GALVANIZED IRON PIPE
 20 1/2" DIA. GALVANIZED IRON PIPE
 21 1/2" DIA. GALVANIZED IRON PIPE
 22 1/2" DIA. GALVANIZED IRON PIPE
 23 1/2" DIA. GALVANIZED IRON PIPE
 24 1/2" DIA. GALVANIZED IRON PIPE
 25 1/2" DIA. GALVANIZED IRON PIPE
 26 1/2" DIA. GALVANIZED IRON PIPE
 27 1/2" DIA. GALVANIZED IRON PIPE
 28 1/2" DIA. GALVANIZED IRON PIPE
 29 1/2" DIA. GALVANIZED IRON PIPE
 30 1/2" DIA. GALVANIZED IRON PIPE
 31 1/2" DIA. GALVANIZED IRON PIPE
 32 1/2" DIA. GALVANIZED IRON PIPE
 33 1/2" DIA. GALVANIZED IRON PIPE
 34 1/2" DIA. GALVANIZED IRON PIPE
 35 1/2" DIA. GALVANIZED IRON PIPE
 36 1/2" DIA. GALVANIZED IRON PIPE
 37 1/2" DIA. GALVANIZED IRON PIPE
 38 1/2" DIA. GALVANIZED IRON PIPE
 39 1/2" DIA. GALVANIZED IRON PIPE
 40 1/2" DIA. GALVANIZED IRON PIPE
 41 1/2" DIA. GALVANIZED IRON PIPE
 42 1/2" DIA. GALVANIZED IRON PIPE
 43 1/2" DIA. GALVANIZED IRON PIPE
 44 1/2" DIA. GALVANIZED IRON PIPE
 45 1/2" DIA. GALVANIZED IRON PIPE
 46 1/2" DIA. GALVANIZED IRON PIPE
 47 1/2" DIA. GALVANIZED IRON PIPE
 48 1/2" DIA. GALVANIZED IRON PIPE
 49 1/2" DIA. GALVANIZED IRON PIPE
 50 1/2" DIA. GALVANIZED IRON PIPE
 51 1/2" DIA. GALVANIZED IRON PIPE
 52 1/2" DIA. GALVANIZED IRON PIPE
 53 1/2" DIA. GALVANIZED IRON PIPE
 54 1/2" DIA. GALVANIZED IRON PIPE
 55 1/2" DIA. GALVANIZED IRON PIPE
 56 1/2" DIA. GALVANIZED IRON PIPE
 57 1/2" DIA. GALVANIZED IRON PIPE
 58 1/2" DIA. GALVANIZED IRON PIPE
 59 1/2" DIA. GALVANIZED IRON PIPE
 60 1/2" DIA. GALVANIZED IRON PIPE
 61 1/2" DIA. GALVANIZED IRON PIPE
 62 1/2" DIA. GALVANIZED IRON PIPE
 63 1/2" DIA. GALVANIZED IRON PIPE
 64 1/2" DIA. GALVANIZED IRON PIPE
 65 1/2" DIA. GALVANIZED IRON PIPE
 66 1/2" DIA. GALVANIZED IRON PIPE
 67 1/2" DIA. GALVANIZED IRON PIPE
 68 1/2" DIA. GALVANIZED IRON PIPE
 69 1/2" DIA. GALVANIZED IRON PIPE
 70 1/2" DIA. GALVANIZED IRON PIPE
 71 1/2" DIA. GALVANIZED IRON PIPE
 72 1/2" DIA. GALVANIZED IRON PIPE
 73 1/2" DIA. GALVANIZED IRON PIPE
 74 1/2" DIA. GALVANIZED IRON PIPE
 75 1/2" DIA. GALVANIZED IRON PIPE
 76 1/2" DIA. GALVANIZED IRON PIPE
 77 1/2" DIA. GALVANIZED IRON PIPE
 78 1/2" DIA. GALVANIZED IRON PIPE
 79 1/2" DIA. GALVANIZED IRON PIPE
 80 1/2" DIA. GALVANIZED IRON PIPE
 81 1/2" DIA. GALVANIZED IRON PIPE
 82 1/2" DIA. GALVANIZED IRON PIPE
 83 1/2" DIA. GALVANIZED IRON PIPE
 84 1/2" DIA. GALVANIZED IRON PIPE
 85 1/2" DIA. GALVANIZED IRON PIPE
 86 1/2" DIA. GALVANIZED IRON PIPE
 87 1/2" DIA. GALVANIZED IRON PIPE
 88 1/2" DIA. GALVANIZED IRON PIPE
 89 1/2" DIA. GALVANIZED IRON PIPE
 90 1/2" DIA. GALVANIZED IRON PIPE
 91 1/2" DIA. GALVANIZED IRON PIPE
 92 1/2" DIA. GALVANIZED IRON PIPE
 93 1/2" DIA. GALVANIZED IRON PIPE
 94 1/2" DIA. GALVANIZED IRON PIPE
 95 1/2" DIA. GALVANIZED IRON PIPE
 96 1/2" DIA. GALVANIZED IRON PIPE
 97 1/2" DIA. GALVANIZED IRON PIPE
 98 1/2" DIA. GALVANIZED IRON PIPE
 99 1/2" DIA. GALVANIZED IRON PIPE
 100 1/2" DIA. GALVANIZED IRON PIPE



RECORDER'S MEMO: Legibility of writing, typing, or printing for reproductive purpose may be unsatisfactory in this document when received.

MOSEY ENGINEERING ASSOCIATES, INC.
 3600 BRIDGE ROAD SARASOTA, FL 34232

CONDOMINIUM BOOK 2279-2462157
 SERIES 2 OF 2 SHEETS

