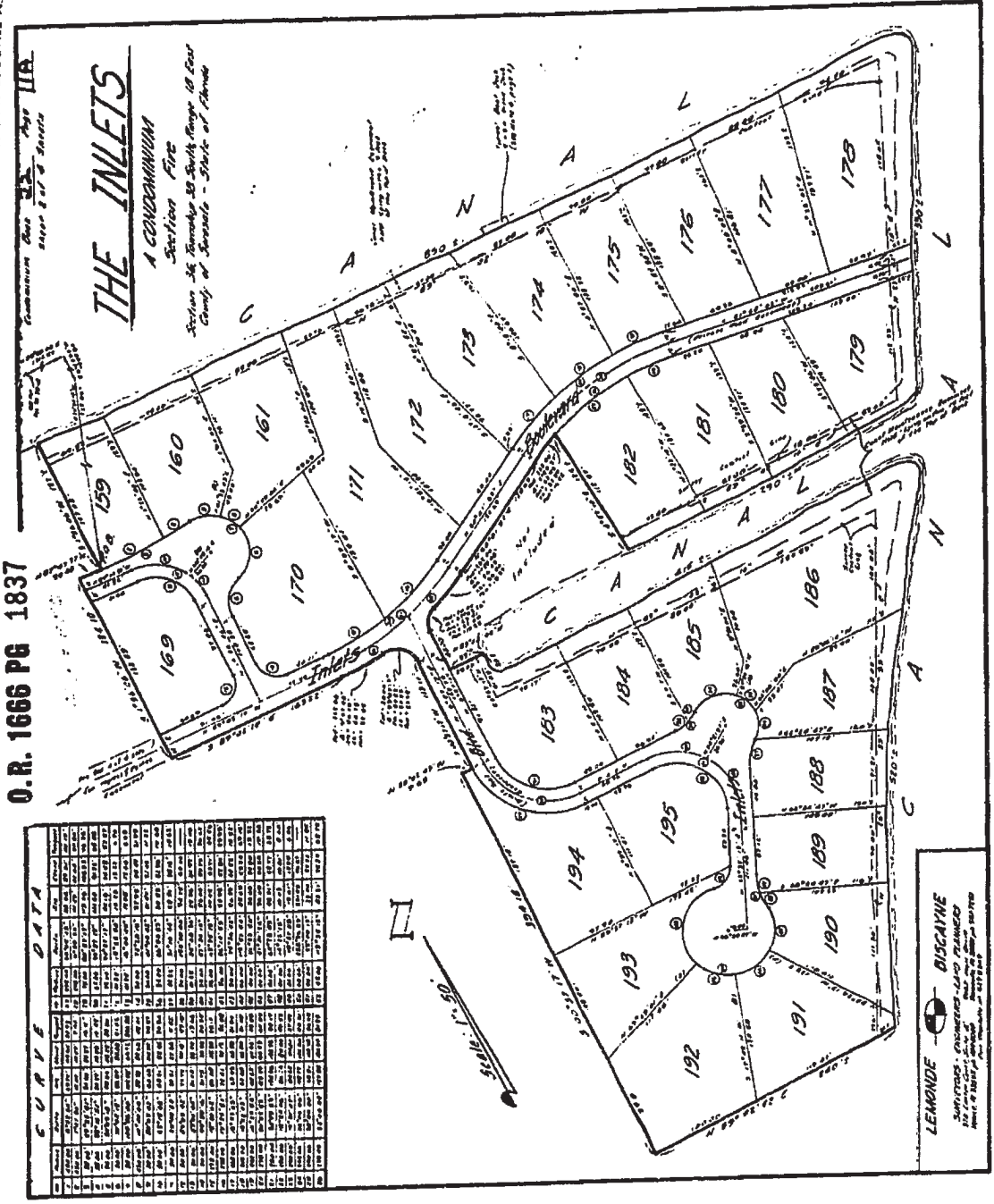


RECORDING MEMO: Legibility of writing, typing or printing for reproductive purpose may be unsatisfactory in this document when received.



RECORDER'S MEMO: Legibility of writing, typing or printing for reproductive purpose may be unsatisfactory in this document when received.

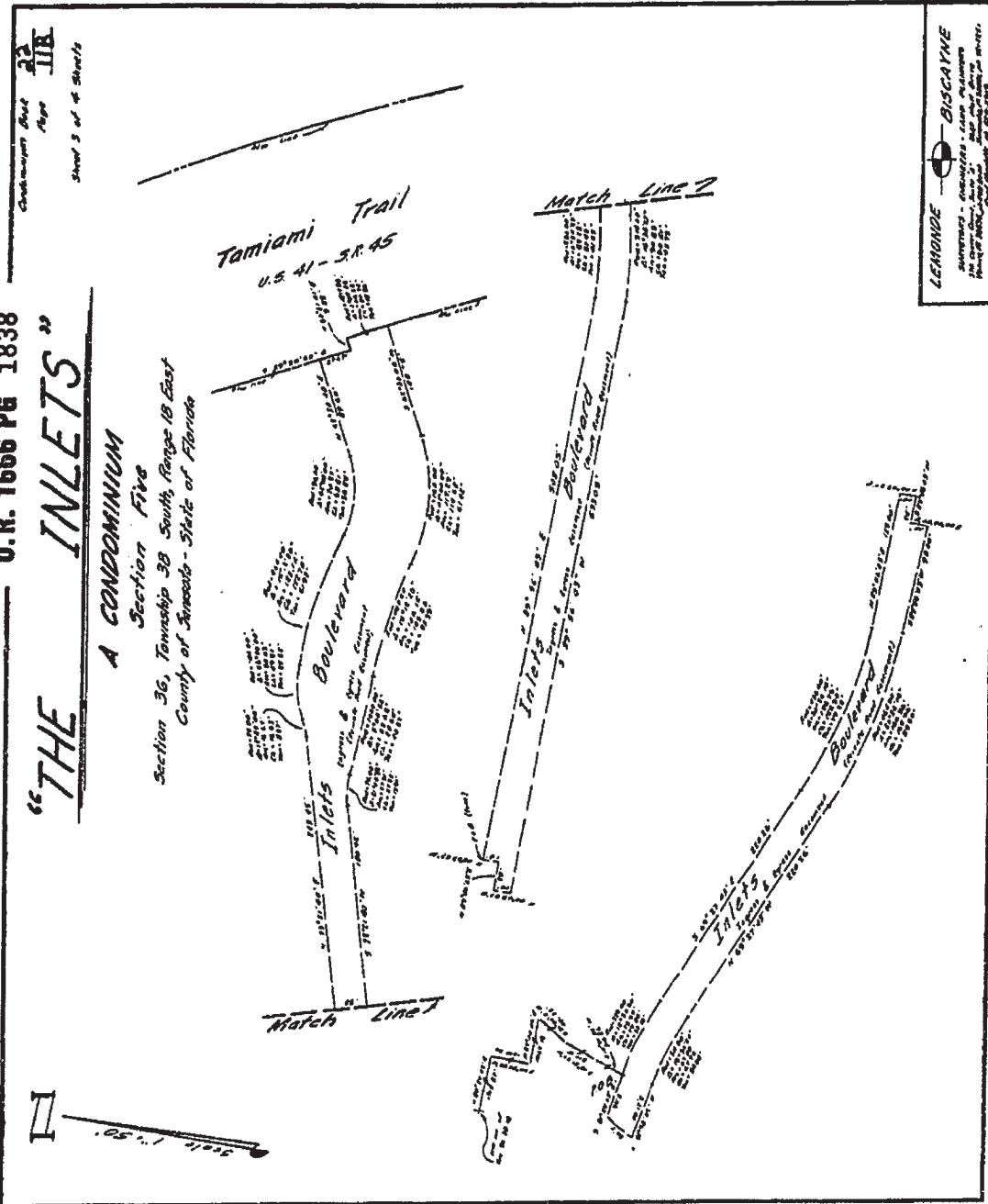
O.R. 1666 PG 1838

"THE INLETS"

A CONDOMINIUM

Section Five
 Section 36, Township 30 South, Range 18 East
 County of Sarasota - State of Florida

Checkmap Book 22
 Page 11E
 Sheet 5 of 4 Sheets



RECORDER'S MEMO: Legibility of writing, typing or printing for reproductive purpose may be unsatisfactory in this document when received.

O. R. 1666 PG 1839

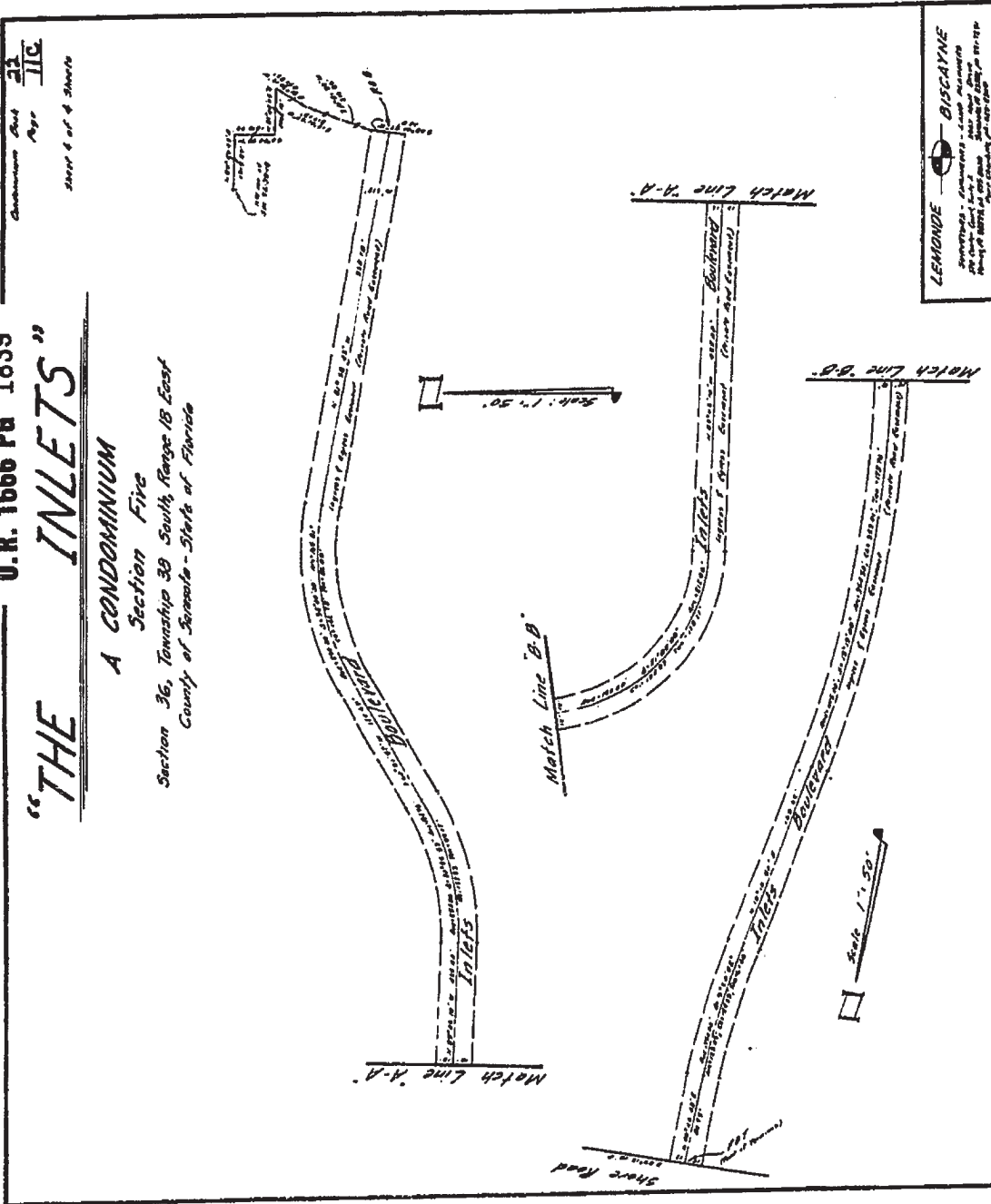
"THE INLETS"

A CONDOMINIUM

Section Five

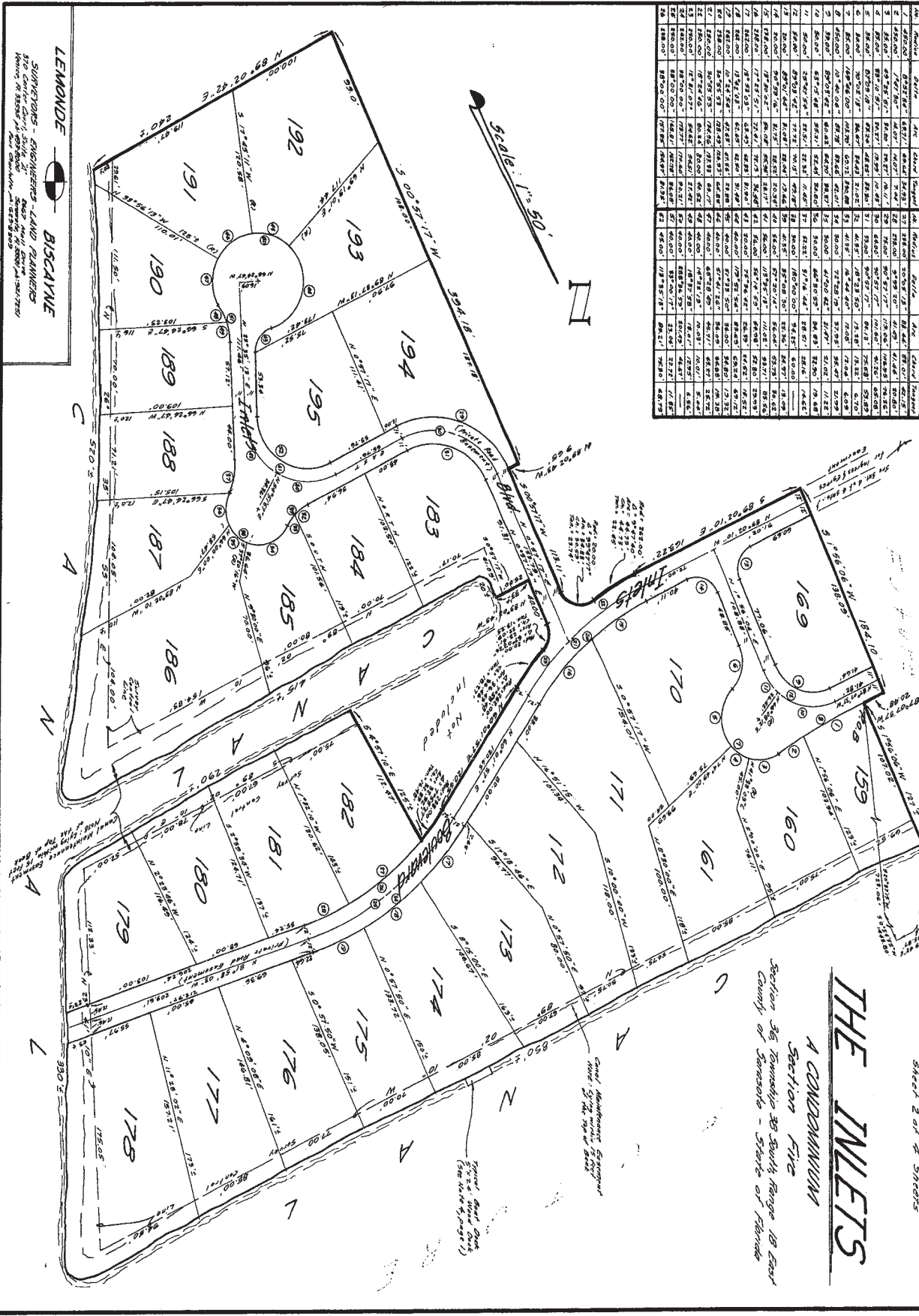
Section 36, Township 39 South, Range 18 East
County of Sarasota - State of Florida

Drawn by JIC
Page 29
Sheet 6 of 4 Sheets



CURVE DATA

NO.	BEARING	CHORD	ARC	ANGLE	CHORD	ANGLE	CHORD	ANGLE	CHORD	ANGLE
1	N 89° 20' 28" E	100.00	100.00	90.00	100.00	90.00	100.00	90.00	100.00	90.00
2	N 89° 20' 28" E	100.00	100.00	90.00	100.00	90.00	100.00	90.00	100.00	90.00
3	N 89° 20' 28" E	100.00	100.00	90.00	100.00	90.00	100.00	90.00	100.00	90.00
4	N 89° 20' 28" E	100.00	100.00	90.00	100.00	90.00	100.00	90.00	100.00	90.00
5	N 89° 20' 28" E	100.00	100.00	90.00	100.00	90.00	100.00	90.00	100.00	90.00
6	N 89° 20' 28" E	100.00	100.00	90.00	100.00	90.00	100.00	90.00	100.00	90.00
7	N 89° 20' 28" E	100.00	100.00	90.00	100.00	90.00	100.00	90.00	100.00	90.00
8	N 89° 20' 28" E	100.00	100.00	90.00	100.00	90.00	100.00	90.00	100.00	90.00
9	N 89° 20' 28" E	100.00	100.00	90.00	100.00	90.00	100.00	90.00	100.00	90.00
10	N 89° 20' 28" E	100.00	100.00	90.00	100.00	90.00	100.00	90.00	100.00	90.00
11	N 89° 20' 28" E	100.00	100.00	90.00	100.00	90.00	100.00	90.00	100.00	90.00
12	N 89° 20' 28" E	100.00	100.00	90.00	100.00	90.00	100.00	90.00	100.00	90.00
13	N 89° 20' 28" E	100.00	100.00	90.00	100.00	90.00	100.00	90.00	100.00	90.00
14	N 89° 20' 28" E	100.00	100.00	90.00	100.00	90.00	100.00	90.00	100.00	90.00
15	N 89° 20' 28" E	100.00	100.00	90.00	100.00	90.00	100.00	90.00	100.00	90.00
16	N 89° 20' 28" E	100.00	100.00	90.00	100.00	90.00	100.00	90.00	100.00	90.00
17	N 89° 20' 28" E	100.00	100.00	90.00	100.00	90.00	100.00	90.00	100.00	90.00
18	N 89° 20' 28" E	100.00	100.00	90.00	100.00	90.00	100.00	90.00	100.00	90.00
19	N 89° 20' 28" E	100.00	100.00	90.00	100.00	90.00	100.00	90.00	100.00	90.00
20	N 89° 20' 28" E	100.00	100.00	90.00	100.00	90.00	100.00	90.00	100.00	90.00
21	N 89° 20' 28" E	100.00	100.00	90.00	100.00	90.00	100.00	90.00	100.00	90.00
22	N 89° 20' 28" E	100.00	100.00	90.00	100.00	90.00	100.00	90.00	100.00	90.00
23	N 89° 20' 28" E	100.00	100.00	90.00	100.00	90.00	100.00	90.00	100.00	90.00
24	N 89° 20' 28" E	100.00	100.00	90.00	100.00	90.00	100.00	90.00	100.00	90.00



THE INLETS

A CONDOMINIUM
 Section 36 Township 38 South Range 18 East
 County of Sarasota - State of Florida

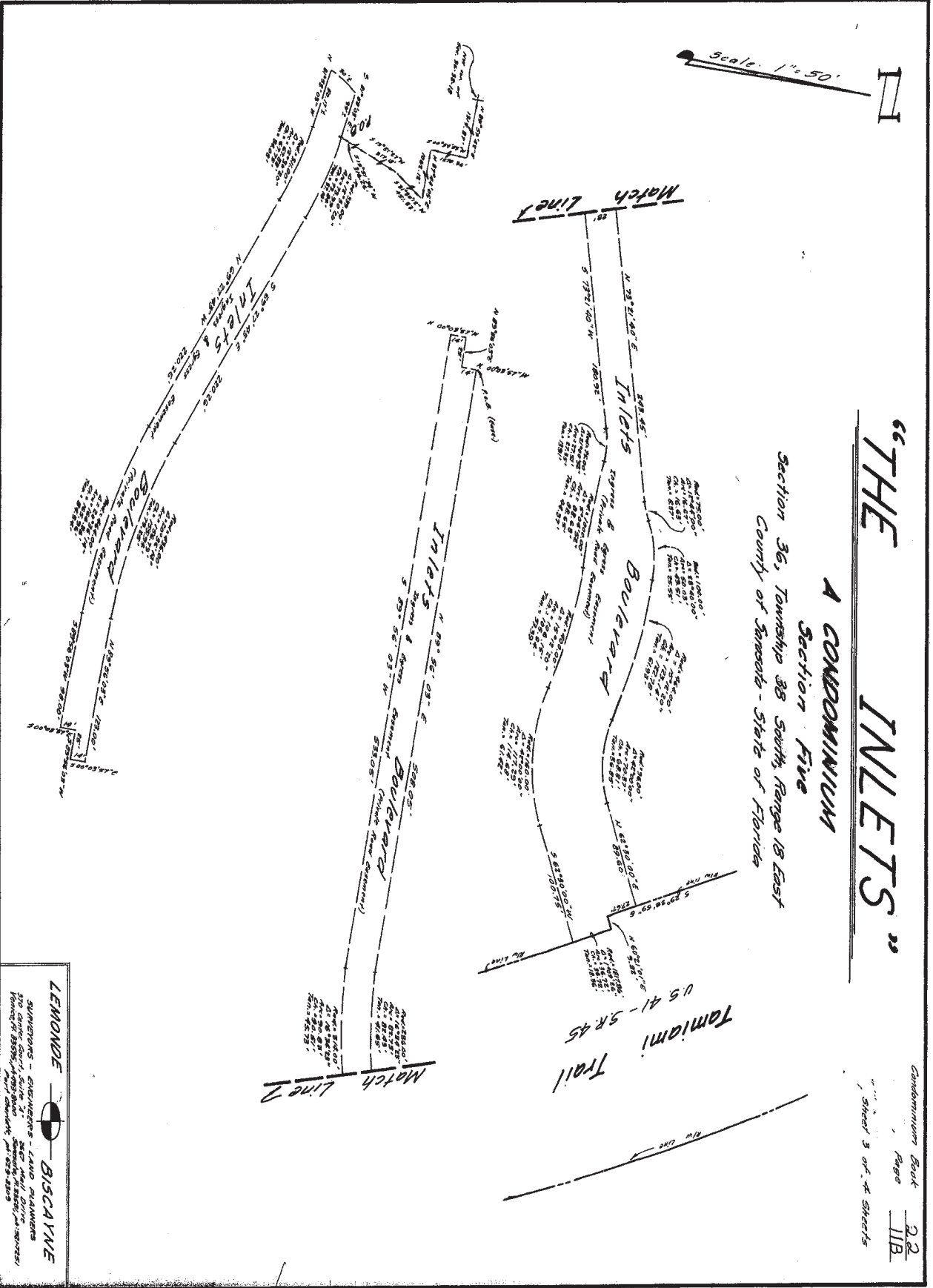
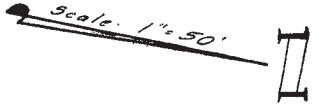
Condominium Book 22 Page 11A
 Sheet 2 of 4 Sheets

LEMONDE BISCAYNE
 SURVEYORS - ENGINEERS - LAND PLANNERS
 370 CENTRAL AVENUE, SUITE 20
 TAMPA, FLORIDA 33609
 PHONE: 813-281-1111 FAX: 813-281-1112
 WWW.LEMONDEBISCAYNE.COM

"THE INLETS"

A CONDOMINIUM
 Section Five
 Township 36 South, Range 18 East
 County of Sarasota - State of Florida

Condominium Book 22
 Page 11B
 Sheet 3 of 4 Sheets

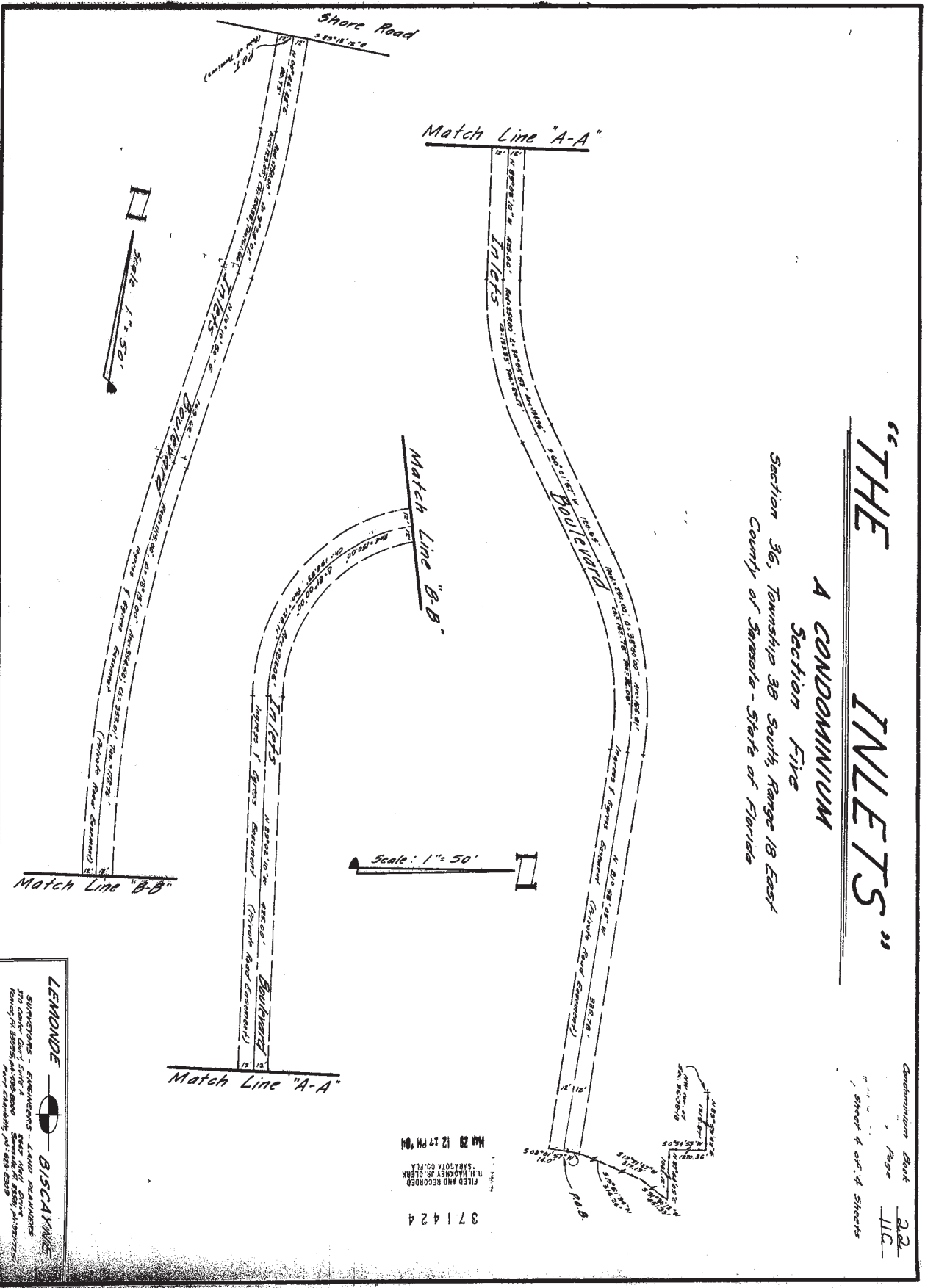


LEMONDE  BISCAYNE
 SURVEYORS - ENGINEERS - LAND PLANNERS
 370 Gandy Blvd., Suite 201
 P.O. Box 11000, Miami, Florida 33101
 Phone: (305) 571-1100
 Fax: (305) 571-1101

"THE INLETS"

A CONDOMINIUM
Section Five
TOWNSHIP 38 SOUTH, RANGE 18 EAST
COUNTY OF SARASOTA, STATE OF FLORIDA

Condominium Book 22
Page 11C
Sheet 4 of 4 Sheets



371424
FILED AND RECORDED
R. H. HANNEY JR., CLERK
SARASOTA COUNTY, FLA.
MAY 29 12 17 PM '04

LEMONDE BISCAYNE
SURVEYORS - ENGINEERS - LAND PLANNERS
1701 CENTER CITY SQUARE
TAMPA, FLORIDA 33605
PH: 813-288-1111
FAX: 813-288-1112