



RECORDER'S MEMO: Legibility of writing, typing or printing for reproductive purpose may be unsatisfactory in this document when received.

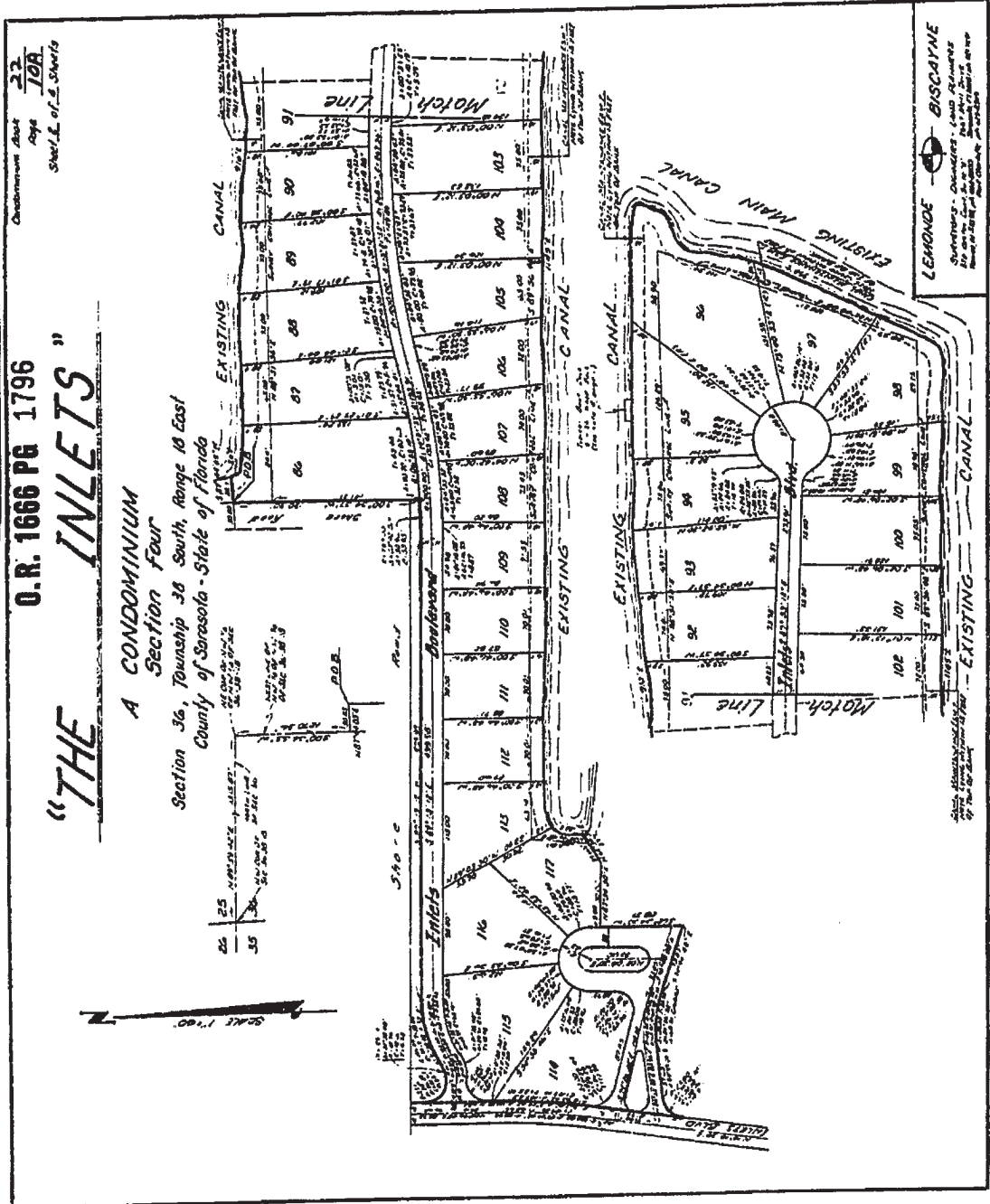
Order No. 1796  
 Page 27  
 Sheet 2 of 2 Sheets

O.R. 1666 PG 1796

# "THE INLETS"

A CONDOMINIUM  
 Section Four

Section 36, Township 30 South, Range 18 East  
 County of Sarasota - State of Florida



LEMONDE BISCAYNE  
 Surveyors - Civil Engineers  
 1100 1st Street, N.W.  
 Tallahassee, Florida 32302

RECORDER'S MEMO: Legibility of writing, typing or printing for reproductive purpose may be unsatisfactory in this document when received.

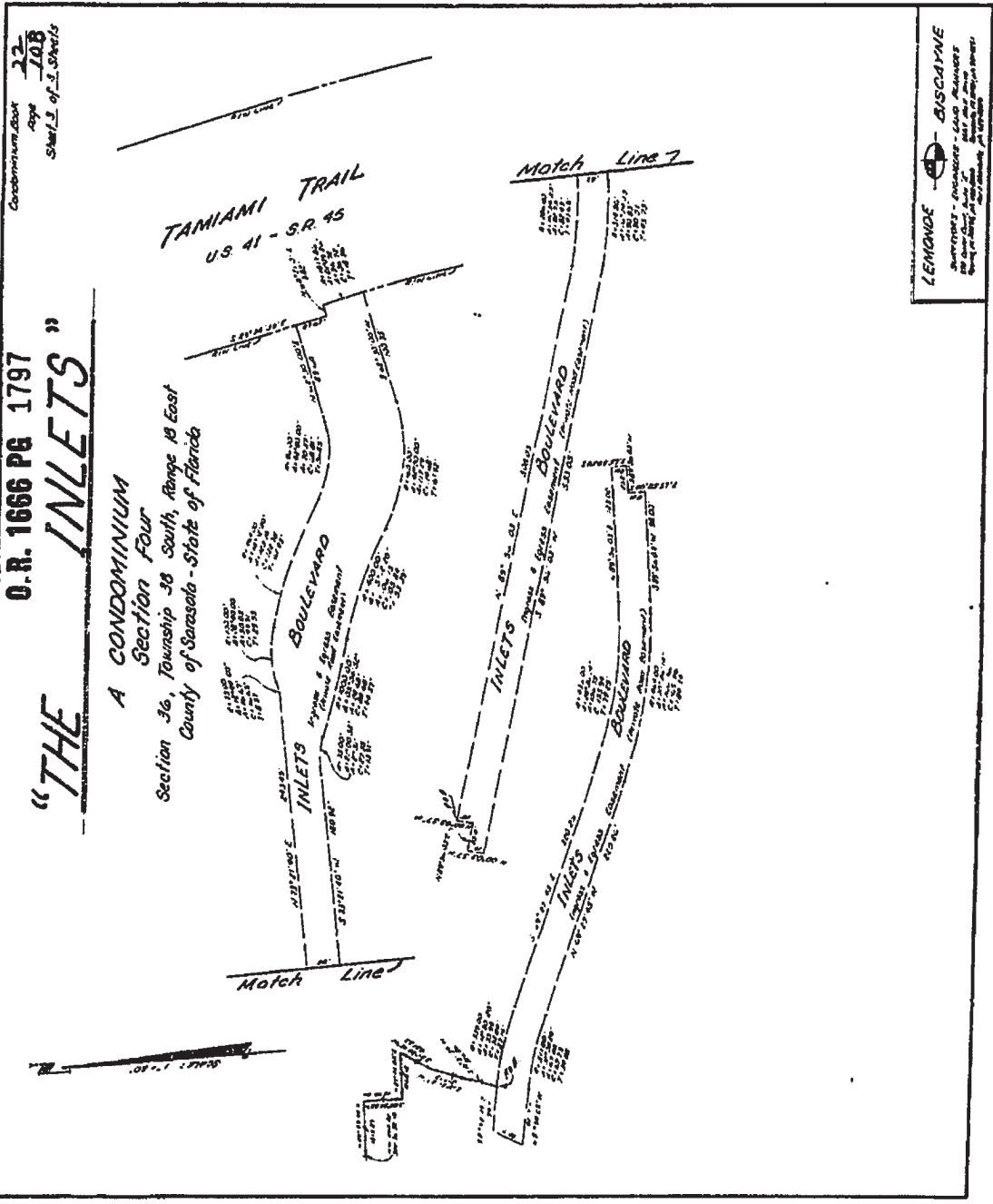
22  
 Page 108  
 Sheet 3 of 3 Sheets

O.R. 1666 PG 1797

**"THE INLETS"**

A CONDOMINIUM

Section Four  
 Section 36, Township 38 South, Range 18 East  
 County of Sarasota - State of Florida



LEMONDE - BISCAMPE  
 Surveyors - ENGINEERS - LAND PLANNERS  
 1000 N. GULF BLVD., SUITE 100  
 TAMPA, FLORIDA 33602

RECORDER'S MEMO: Legibility of writing, typing or printing for reproductive purpose may be unsatisfactory in this document when received.

Subsequent sheets  
 Page 128  
 Sheet 2 of 2 Sheets

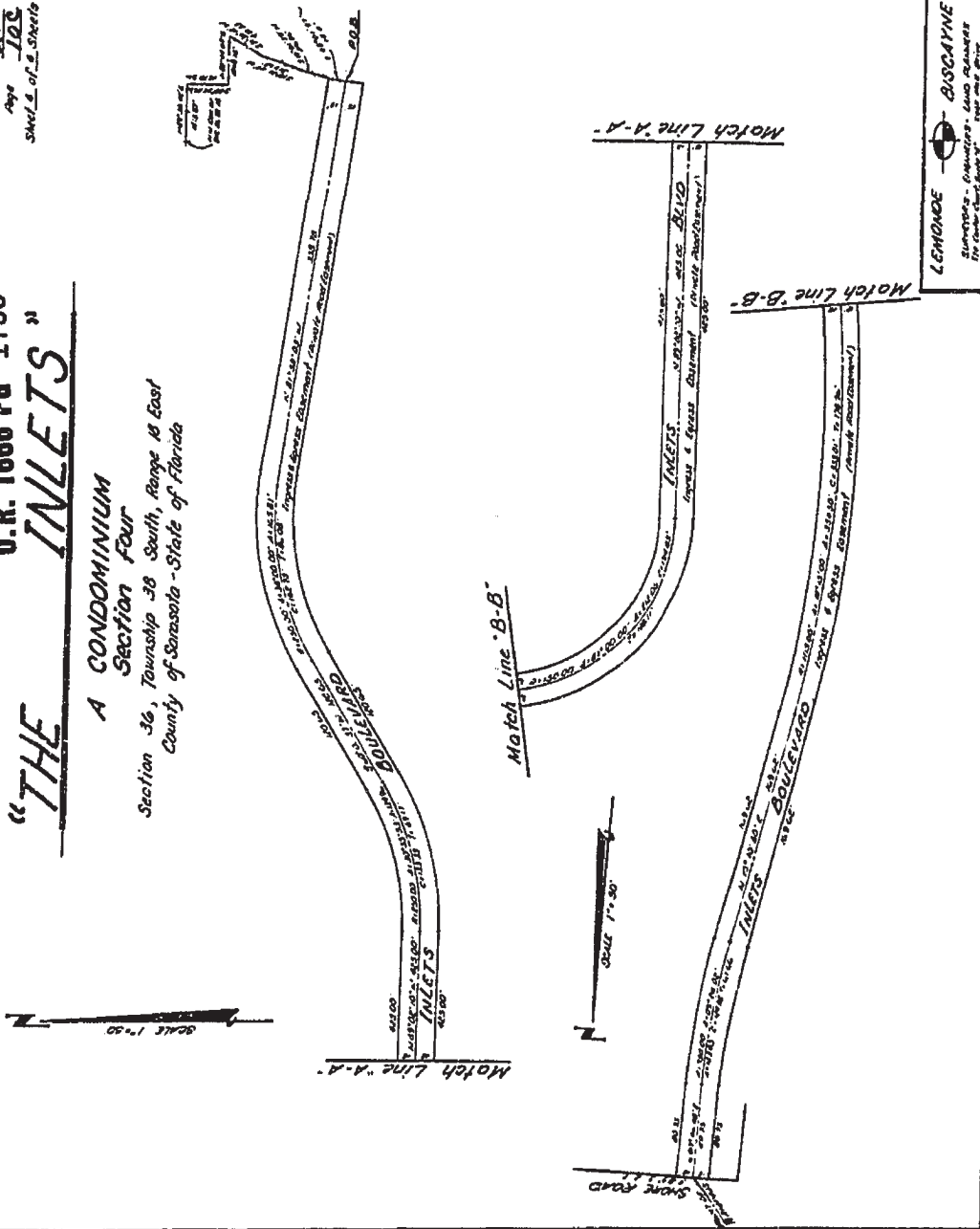
O.R. 1666 PG 1798

# "THE INLETS"

## A CONDOMINIUM Section Four

Section 36, Township 38 South, Range 18 East  
 County of Sarasota - State of Florida

SCALE 1"=50'

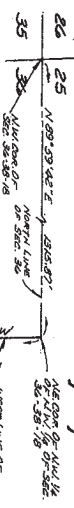


LEMONDE - BISCAYNE  
 Surveyors - Engineers - Land Managers  
 1100 1/2 South ...  
 Sarasota, Florida 34236

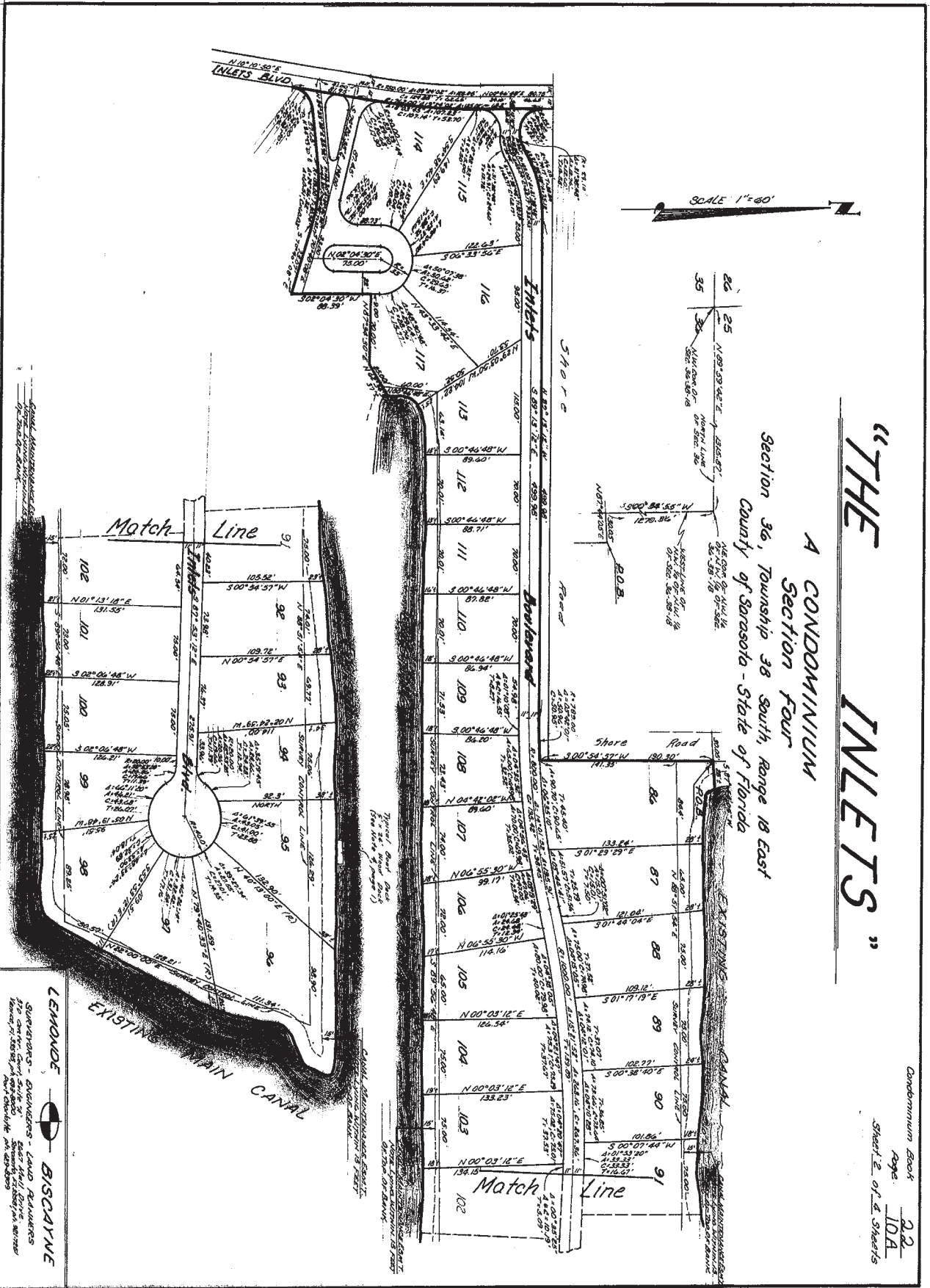


# "THE INLETS"

A CONDOMINIUM  
 Section Four  
 Section 36, Township 38 South Range 18 East  
 County of Sarasota - State of Florida



SCALE 1"=60'

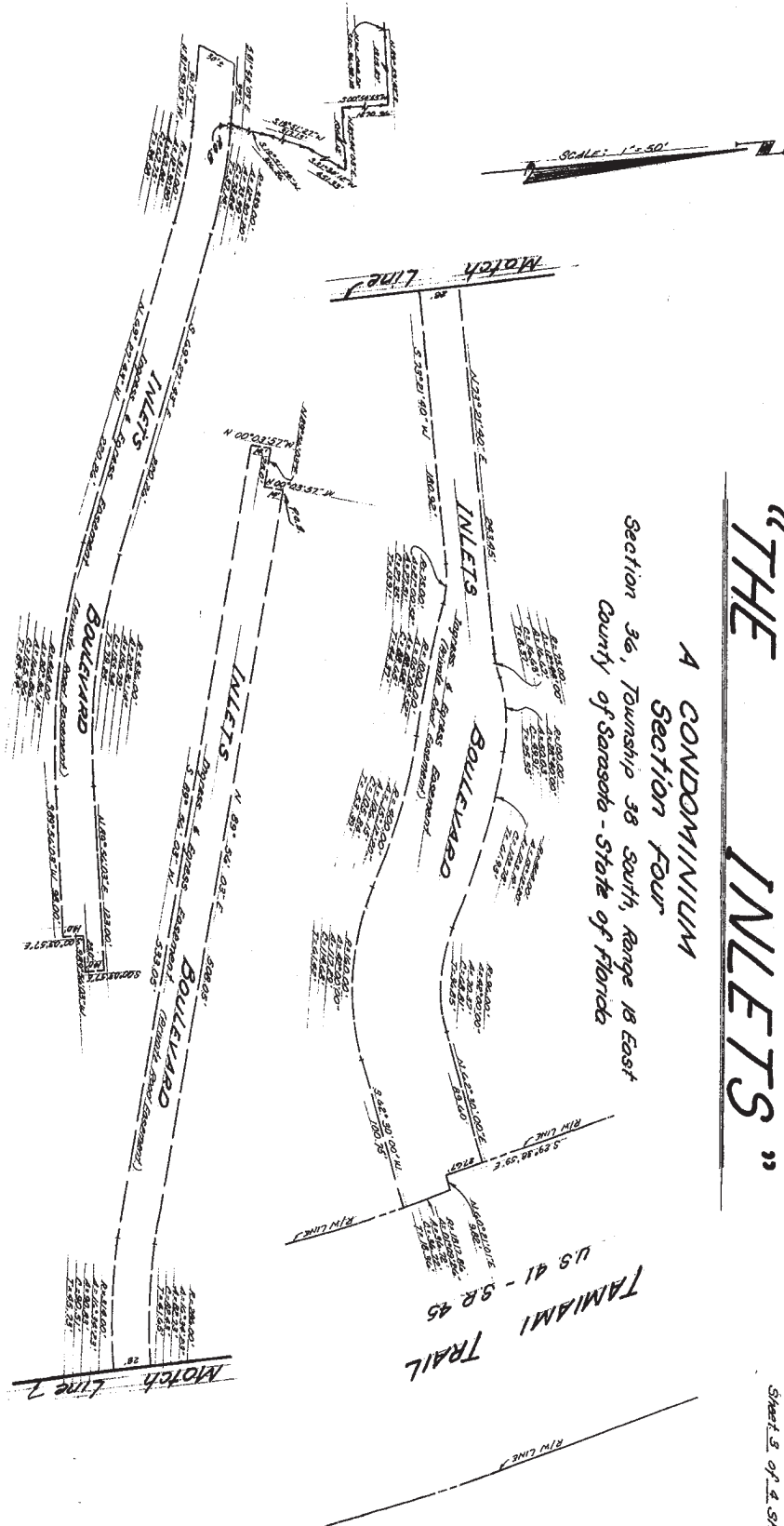


General Measurements  
 of the Condominium  
 as shown on this plan

LEMONDE  BISCAIYNE  
 ARCHITECTS - ENGINEERS - LAND PLANNERS  
 1100 1/2 Avenue of the Americas, Suite 200  
 New York, N.Y. 10020-1101  
 Tel: (212) 675-1100  
 Fax: (212) 675-1101


# "THE INLETS"

A CONDOMINIUM  
 Section Four  
 Section 36, Township 38 South, Range 18 East  
 County of Sarasota - State of Florida



SCALE: 1"=50'

Condominium Book  
 Page 22  
 10B  
 Sheet 5 of 4 Sheets

LEMONDE  BISCAIYNE  
 SURVEYORS - ENGINEERS - LAND PLANNERS  
 570 Center Court, Suite 101  
 Biscayne Park, Florida 33103  
 Phone: (305) 351-1111

# "THE INLETS"

A CONDOMINIUM  
 SECTION FOUR  
 Section 36, Township 38 South, Range 18 East  
 County of Sarasota - State of Florida

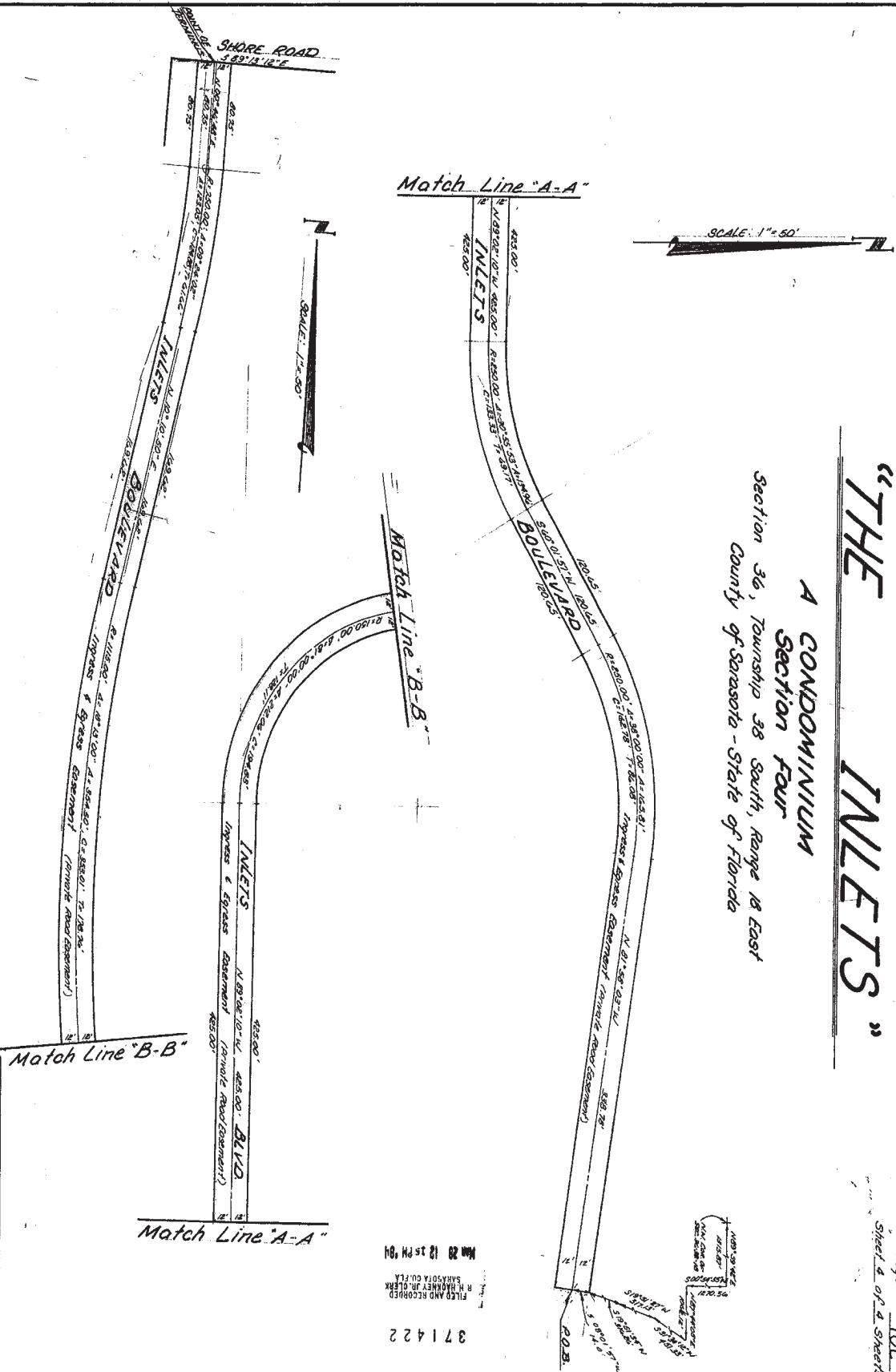
Condominium Book 22

Page 100

Sheet 4 of 4 Sheets

SCALE: 1" = 50'

SCALE: 1" = 50'



FILED AND RECORDED  
 IN THE PUBLIC RECORDS  
 OF SARASOTA COUNTY, FLA.  
 MAY 29 12 18 PM '94  
 371422

LEMONDE  BISCAIYNE  
 SURVEYORS - ENGINEERS - LAND PLANNERS  
 570 Center Court, Suite 200  
 Venice, Florida 33596  
 Phone: (813) 971-1111  
 Fax: (813) 971-1112