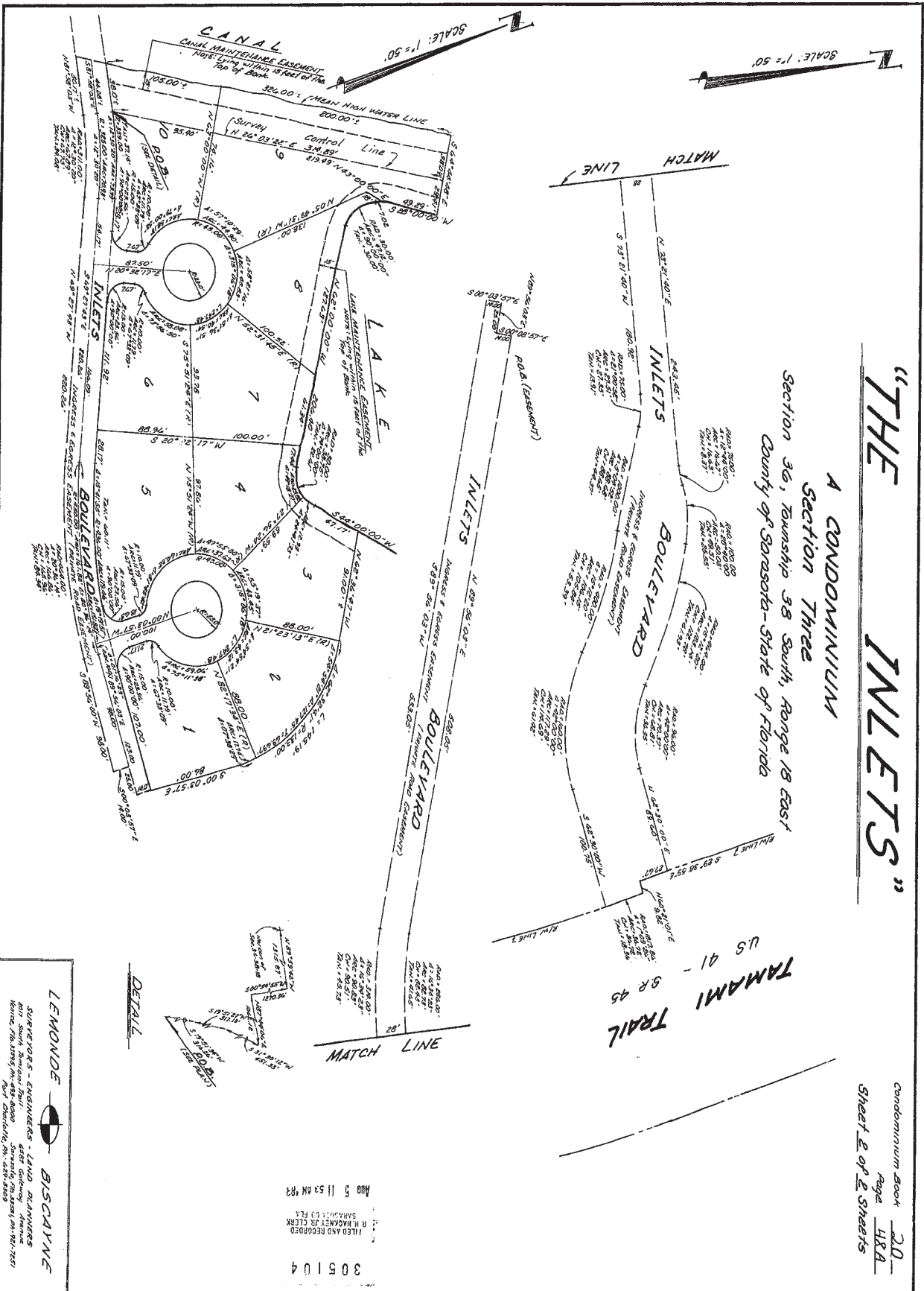


"THE INLETS"

A CONDOMINIUM
SECTION THREE
Section 36, Township 38 South, Range 18 East
County of Sarasota - State of Florida

TAMAMI TRAIL
SR 95
US 91



Condominium Book
Page 48A
Sheet 2 of 2 Sheets

305104
FILED AND RECORDED
R. H. HACKNEY JR. CLERK
SARASOTA, FLA.
AUG 5 11 53 AM '83

LEMONDE BISCAYNE
SURVEYORS - ENGINEERS - LAND PLANNERS
407 South Tamiami Trail
Sarasota, Florida 34236
Phone: 941-552-1111